

# OLD ORCHARD BEACH RECREATION 50+ CLUB

## WINTER PROGRAMS

DECEMBER 1ST, 2025-FEBRUARY 28TH, 2026



**Registration begins on Friday,  
November 14<sup>th</sup>, 2025**

**Don't wait to register! Many trips are limited to only 12 participants and some have minimum requirements to run! If a program is full, don't dismay! You can join the waitlist and we will do our best to get you in. If enough participants are on the waitlist, we might be able to arrange for a bigger bus or a second trip!**

**Office Hours:  
Monday-Friday  
8:30am-4:00pm**

**[www.oobrec.com](http://www.oobrec.com) ~ 207-934-0860 ~ 7 Ballpark Way. OOB, ME 04064**

## **50+ Club Membership**

The 50+ Club is an exciting way to be connected with many wonderful and active adults within our community and surrounding areas. For \$10 per calendar year, you will get discounted rates on trips and events, as well as preferred registration. All memberships are from January 1st-December 31st, regardless of registration date.

**Registration begins on Friday, November 14<sup>th</sup>, 2025 for 50+ Club Members**

**Registration for non-members begins on Friday, November 21<sup>st</sup>, 2025 at an additional \$5 charge per program**

## **Recreation Department Policies**

**Registration-** Members may register beginning on Friday, November 14th. Non-members may register beginning on Friday, November 21st *at an additional \$5 per program*. Pre-registration and pre-payment is required for all programs, including FREE programs. You can register at our office or via our website: [www.oobrec.com](http://www.oobrec.com)

**Refunds-** If we cancel a program, all fees will be returned to your account as an account credit. If you withdraw 1 week or more prior to the trip, you will be credited the full amount, unless it's a contracted program. If you cancel within 1 week to the trip, you will receive a full account credit **IF** we are able to fill your seat with someone else.

**Program Locations-** Unless otherwise stated, all programs and trips take place at and/or depart from the Recreation Department at The Ballpark. ***Please arrive at least 10 minutes prior to departure time.***

**Photography Clause-** We love to share the fun we have! During our trips and programs, staff may take photos to post on our social media pages or use in future promotional materials (like this brochure). If you prefer not to be photographed or included, please let Kira know ahead of time--we totally understand!

**Emergency Contacts-** For everyone's safety, all participants are required to have at least one emergency contact on file with the Recreation Department. If your contact information has changed or you're not sure what we have on file, please reach out to Kira to update your information. Your safety is our top priority!

**Extreme Weather Policy-** In cases of extreme weather (such as dangerous heat, cold, snow, or storms), we may need to cancel or reschedule programs to keep everyone safe. We will do our best to find a new date for the program. If we're unable to reschedule, you will be offered either a full refund or a credit towards another program.



**Have a program idea or suggestion? Let us know! Talk to Kira or send her an email at [kclark@oobmaine.com](mailto:kclark@oobmaine.com)**



# Activity Level Guide



To help you choose the programs that are the best fit for you, we've added activity level indicators to each trip or program listing. Please use this guide when deciding which adventures to join us for!

## Level 1--Easy Going

Minimal walking or activity. Most of the program is seated or stationary. Great for those who prefer a relaxed pace.

## Level 2--Moderate

Some walking required--such as navigating museums, parks, or downtown areas. May include uneven surfaces or standing for short periods of time.

## Level 3--Active

Extended periods of walking, standing, or stair climbing. Participants should be comfortable being on their feet for longer stretches.

***If you have questions about a specific program's activity level or accessibility, please reach out to Kira--we're happy to help and want to make our programs inclusive and accessible for everyone!***

## A NOTE FROM KIRA

Well, we did it--we've officially made it through another spooktacular fall full of candy corn, laughs, and just enough mischief to keep things interesting! Thank you for bringing your humor, energy, and teamwork to every trip, game day, and event. You are all what truly make this club, community, and especially this job, so special.

Now, as we trade pumpkins for snowflakes, and candy corn for cocoa, it's time to cozy up for another season of fun! This winter, we'll keep the laughter (and adventures) going--without needing snow tires or an escape plan (looking at you, zombie room crew)!

I am so excited for another season of memories, merriment, and maybe even a little holiday magic. Thank you for being part of the 50+ Club family--you make every single season brighter!

Stay warm, stay wonderful, and I will see you soon--hopefully with a hot chocolate in hand.



Kira 



# DECEMBER PROGRAMS

## Pre-Holiday Shopping at the Merrimack Outlets

We are on our way to the Merrimack Premium Outlets in Merrimack, New Hampshire! With more than 100 stores to explore, you can spend the day indulging in tax-free outlet shopping, enjoying discounts ranging from 25% to 65% off the regular prices! Don't forget to visit the food court to grab a bite to eat and refuel for lunch! Please note that the fee covers transportation only; any purchases made will be at your own expense.



**Date:** Monday, December 1st

**Time:** Bus departs at 9:00am

**Price:** \$15

*Minimum Registrations: 8 people*

*Maximum Registrations: 12 people*

**Activity Level: Moderately Active-- level 2.5**



## Gardens Aglow & Taste of Maine

Join us as we head to the Coastal Maine Botanical Gardens in Boothbay for their annual Gardens Aglow Event! Experience nature in motion and see the gardens come alive after dark! New England's premier light show transforms the landscape into a glowing journey through scenes depicting the flora and fauna of Maine's forests, shorelines, and meadows. Wander through tunnels of light, and discover two of their popular Trolls! We will stop for dinner at the Taste of Maine restaurant before heading to the Botanical Gardens. Fee covers transportation and entrance to the gardens. Dinner and any purchases are on your own.



**Date:** Thursday, December 4th

**Time:** Bus departs at 2:00pm

**Price:** \$37

*Minimum Registrations: 8 people*

*Maximum Registrations: 12 people*

**Activity Level: Active-- level 3**



## Sea Glass Tree Workshop

We are heading to Coastal Craft Workshop in OOB to create two beautiful Sea Glass Trees.

Begin with bases that 4 & 7 inches tall; with embellishments they can be up to 9 inches tall. Keep them as a set or split them up. Choose from a variety of faux sea glass (tumbled) colors.

Great to leave as is and use for year-round decor, or add embellishments and use them as holiday treasures. Great for yourself or the perfect gift! Embellishments include starfish, pearls, and shells. Bring your own items to add if you would like. The fee covers all materials to make 2 trees and workshop host. \*\*\*Small fairy light strands will be available for purchase that day for an additional \$3.



**Date:** Friday, December 5th

**Time:** Bus departs at 9:15am

**Price:** \$60

*Minimum Registrations: 7 people*

*Maximum Registrations: 13 people*

**Activity Level: Easy Going-- level 1**





## A Victorian Nutcracker

We are heading to Merrill Auditorium for a special showing of "A Victorian Nutcracker" featuring live music by the Portland Ballet Orchestra. *A Victorian Nutcracker is a retelling of a young girl's Christmas Eve dream, brought on by a curious gift of a nutcracker, in which she travels to the Sugar Plum Fairy's Land of the Sweets. This version is unique to Portland and its history.* The show is 2 hours in length. We will stop for lunch at the Olive Garden after the show, lunch will be on your own. Fee covers transportation and ticket to the show.



**Date:** Tuesday, December 16th

**Time:** Bus departs at 8:45am

**Price:** \$15

*Minimum Registrations: 8 people*

*Maximum Registrations: 13 people*

**Activity Level: Easy Going-- level 1**



## Taste the World Mystery Dinner: Vietnamese

As we head into the cold, winter months, it seems like the perfect time to warm up with some food adventures! Join us as we expand our horizons and take our taste buds on a flavorful new journey each month this winter! This month our Taste the World mystery dinner will bring us to discover the flavors of Vietnamese Food, as we celebrate National Pho Day, 1 day early!



**Date:** Thursday, December 11th

**Time:** Bus departs at 4:30pm

**Price:** \$6.00

*Minimum Registrations: 7 people*

*Maximum Registrations: 12 people*

**Activity Level: Easy Going-- level 1**

## Holiday Wreath Decorating Workshop

We are heading to Robillard's Garden Center for a Holiday Wreath Decorating Workshop! Wreath decorating is a great way to celebrate the holiday season! Everyone will be provided with a 12" Balsam Fir Wreath to decorate. Provided decoration options include berries, pinecones, ball ornaments, and bows. They will teach us how to attach each item to our wreaths as well as show us some popular ideas on how to best decorate them! Fee covers transportation, premade fir wreath, all decorations and tools to apply them, refreshments, and studio time.



**Date:** Friday, December 12th

**Time:** Bus departs at 11:30am

**Price:** \$55

*Minimum Registrations: 10 people*

*Maximum Registrations: 13 people*

**Activity Level: Easy Going-- level 1**



## Don Campbell Holiday Show

Tis the season to jingle all the way with Don and the band! Their holiday shows are packed with classic favorites, seasonal originals, and lots of good cheer! This show will take place at Scarborough High School, benefiting the Hospice of Southern Maine. Entrance is FREE to the concert, but donations are encouraged at the door. We will stop for brunch before the show.



**Date:** Sunday, December 14th

**Time:** Bus departs at 10:15am

**Price:** \$5.00

*Minimum Registrations: 7 people*

*Maximum Registrations: 13 people*

**Activity Level: Easy Going-- level 1**



## Local Holiday Light Cruise & Hot Cocoa

Join us at the Ballpark and grab a to-go cup of hot cocoa before getting on the bus with Kira and driving around the area while looking at local Christmas light displays and enjoying Christmas music on the radio! We will drive around for a few hours, looking at the lights, singing, driving over curbs, and enjoying each others company all from the warmth of our bus! No walking required!



**Date:** Tuesday, December 9th

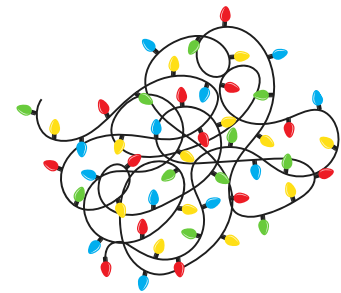
**Time:** Bus departs at 5:00pm

**Price:** \$4.00

*Minimum Registrations: 7 people*

*Maximum Registrations: 12 people*

**Activity Level: Easy Going-- level 1**



## Elf at The Seacoast Rep

We are off to the Seacoast Repertory Theatre in Portsmouth, NH for an evening of holiday cheer with Buddy the Elf! Based on the 2003 cinema hit, the story follows Buddy, a young orphan who mistakenly crawls into Santa's bag of gifts and is transported to the North Pole, where he is raised by Elves who believe he is one of their own. Buddy's enormous size and less than stellar toy making ability eventually reveal the truth about his identity. With Santa's heartfelt permission, Buddy embarks on a journey to New York City in search of his birth father. This modern day holiday classic promises to fill every heart with warmth and laughter, reminding us all of the importance of love, family, and the true meaning of Christmas. We will stop for dinner before the show. Fee covers transportation and ticket to the play, your meal is on your own.



**Date:** Thursday, December 18th

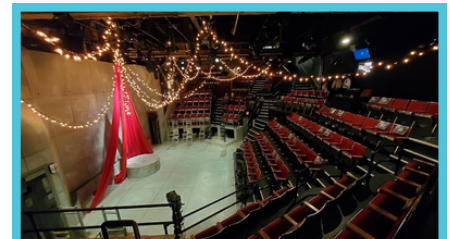
**Time:** Bus departs at 3:45pm

**Price:** \$62

*Minimum Registrations: 8 people*

*Maximum Registrations: 12 people*

**Activity Level: Easy Going-- level 1.5**





## **Ugly Sweater Party, Holiday Treat & Gift Exchange**

Grab your ugliest holiday sweater and join us at the recreation office for a holiday treat party & gift exchange! Bring your favorite holiday treat (homemade or store bought) to share with the group, refreshments and festive music will be provided! We will enjoy treats and socialize as a group at the Ballpark before heading into our holiday break. We will also be doing our annual holiday gift swap at this event. If you would like to participate, please bring a wrapped gift with a value of \$10 or under! Please note that pre-registration is required for this program.



**Date:** Friday, December 19th

**Time:** 11-12:30pm

**Price:** FREE

*Although a free program, please register ahead of time!!*



**Activity Level:** Easy Going-- level 1

## **New Years Super BINGO at The Elks**

We are heading back to the Portland Elks Lodge for their annual New Years Super BINGO so the package will be \$40 (**you pay there--cash only!**) and includes 7 sessions, shotgun, and the winner take all games at the end of the session. The package includes up to 48 cards, you choose how many you would like (minimum of 12). Because it is a super bingo, there will be larger payouts, with total prize money over \$4,000. You will have the opportunity to purchase additional cards, 50/50 tickets, pull tabs, and BINGO daubers. Their on-site kitchen will also be open for lunch and snacks. Fee covers transportation only. They are expecting to be busy, so we will get there early--bring a book, a game, or your best jokes to keep the group entertained while we wait to win all of the money!!



**Date:** Tuesday, December 30th

**Time:** Bus departs at 10:30am

**Price:** \$5

*Minimum Registrations: 6 people  
Maximum Registrations: 13 people*

**Activity Level:** Easy Going-- level 1





# JANUARY PROGRAMS

## National Buffet Day

Join us as we celebrate National Buffet Day (yes, it's a real thing)! We are heading to the Golden Apple Buffet in Biddeford to enjoy a Chinese buffet lunch and catch up after the holidays! Fee covers transportation, lunch is on your own (\$14.99 all you can eat lunch special)



**Date:** Friday, January 2nd  
**Time:** Bus departs at 10:45am  
**Price:** \$3

*Minimum Registrations: 7 people*  
*Maximum Registrations: 13 people*

**Activity Level: Easy Going-- level 1**



## Plant Bingo

We are heading to Robillard's for an afternoon of Plant Bingo! With a minimum of 8 rounds of bingo play, each prize is either a seasonal plant or plant decor! Each person will have 1 bingo card. Fee covers transportation and bingo participation. Feel free to bring a snack and/or drink to enjoy while we play!



**Date:** Tuesday, January 6th  
**Time:** Bus departs at 11:30am  
**Price:** \$12

*Minimum Registrations: 7 people*  
*Maximum Registrations: 13 people*

**Activity Level: Easy Going-- level 1**



## Bob Ross Take 2

We had so much fun this fall painting happy trees and creating our own beautiful masterpieces, so let's do it again! Sticking with the season, we will be following along with the "Grey Winter" tutorial.

**Date:** Thursday, January 8th  
**Time:** 11-12:30ish  
**Price:** \$12

*Minimum Registrations: 7 people*  
*Maximum Registrations: 12 people*



**Activity Level: Easy Going-- level 1**

## **Brunswick Winter Market**

Join us for a Saturday morning adventure to Brunswick to check out their seasonal winter market! The market was formed to provide a wintertime outlet for local Maine agricultural and related products, and to help promote small scale agricultural and rural enterprises. With over 40 vendors, everyone is sure to find something! We will stop for lunch after strolling the market. Fee covers transportation only. Market purchases and lunch are on your own.



**Date:** Saturday, January 10th  
**Time:** Program begins at 9:15am  
**Price:** \$8

*Minimum Registrations: 8 people*  
*Maximum Registrations: 13 people*

**Activity Level: Moderate-- level 2**



## **Finger Knit Scarves With Melissa**

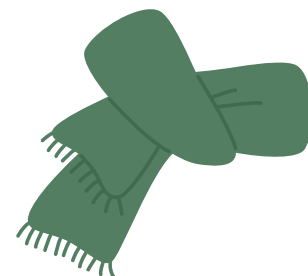
Our very own Melissa (aka the nice lady at the front desk, aka Kira's mom) is going to teach us how to knit using only our fingers! No tools required, just your fingers and some patience! You will leave with a beautiful scarf! Be sure to leave your top 3 color choices for yarn--we will do our best to accommodate everyone!



**Date:** Monday, January 12th  
**Time:** Program begins at 11:00am  
**Price:** \$10

*Minimum Registrations: 5 people*  
*Maximum Registrations: 15 people*

**Activity Level: Easy Going-- level 1**



## **Footlight Theater in Falmouth**

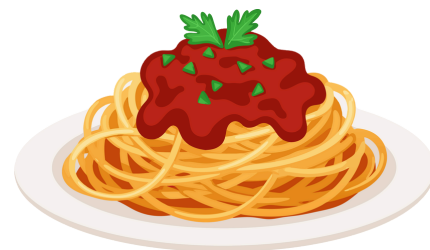
I told you that I would find an excuse to get back to Falmouth and the European Bakery...and I am a woman of my word! We are off to the Footlight Theater in Falmouth for a showing of "I loved, I lost, I made spaghetti". In this performance, "Giulia is a single New Yorker who really knows how to deliver in the one room where it counts--the kitchen. This sizzling comedy serves up big laughs, bold flavors, and the messy, mouthwatering quest for Mr. Right. This deliciously funny story of food, flings, and figuring it out will be a hilarious way to start the new year!" We will stop for dinner before the show. We will also stop for treats at the European Bakery before the show. The fee covers transportation and ticket to the play. Treats and dinner are on your own.



**Date:** Thursday, January 15th  
**Time:** Bus departs at 3:00pm  
**Price:** \$36

*Minimum Registrations: 7 people*  
*Maximum Registrations: 13 people*

**Activity Level: Easy Going-- level 1.5**



## Creative Soul: Mosaic Mirror Workshop

We are off to Creative Soul in Kennebunk for an artsy afternoon in their craft studio! Creative Soul is an art studio that brings the community together for a fun and memorable experience. The studio is a vibrant hub of activity, where creativity thrives, and people of all ages can find their inner artists. We will take part in a mosaic mirror workshop--everyone will have the opportunity to design and create their own mosaic mirror! We will stop for lunch after the workshop. The fee covers transportation and the mosaic mirror workshop. Lunch will be on your own.



**Date:** Wednesday, January 21st

**Time:** Bus departs at 9:15am

**Price:** \$60

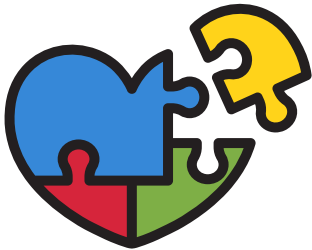
*Minimum Registrations: 7 people*

*Maximum Registrations: 9 people*

**Activity Level: Easy Going-- level 1**

## Puzzle & Book Exchange

Refresh your shelves and puzzle stacks this winter! Join us at the Ballpark for a puzzle & book exchange, where you can bring new or gently used puzzles and books to swap with other group members! It is a great way to find something new while promoting sustainability and meeting fellow readers and puzzle enthusiasts. How it works: bring one or more items to exchange on an honor system (one item in, one item out). Items should be clean and in good, complete condition.



**Date:** Thursday, January 22nd

**Time:** Program is from 11am-12pm

**Price:** FREE

*Minimum Registrations: 6 people*

**Activity Level: Easy Going-- level 1**

## Roller Derby

We all know there was going to be at least one program in here that was going to make you say "what in the world is Kira thinking...?" well...here it is. We are going to "Wheelin' in a Winter Wonderland" to watch a bout featuring the Ship Wreckers and R.I.P. Tides. These bouts are family-friendly and include live entertainment, crafts and activities for children, witty announcers, raffle prizes, merchandise and very local fans. Bouts have two 30-minute periods with half-time entertainment. We will stop for dinner before the bout. Fee covers transportation and ticket to the derby, dinner is on your own.



**Date:** Saturday, January 24th

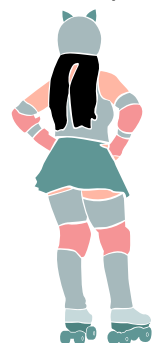
**Time:** Bus departs at 2:30pm

**Price:** \$21

*Minimum Registrations: 7 people*

*Maximum Registrations: 12 people*

**Activity Level: Easy Going-- level 1**





## Game Day with Bucky

Join us at the recreation department for a fun mystery game day with everyone's favorite, Bucky! If you haven't been lucky enough to meet Bucky, he is Jason's alter-ego....be ready for a morning of laughter and good friends!



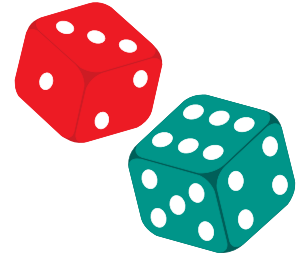
**Date:** Tuesday, January 27th

**Time:** Game day begins at 11am

**Price:** FREE

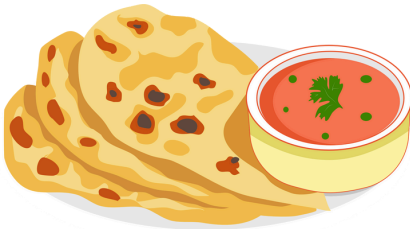
*Minimum Registrations: 7 people*

**Activity Level: Easy Going-- level 1**



## Taste the World Mystery Dinner: Indian

Round two of our winter series Taste the World mystery dinners brings us to the warm flavors of Indian food!



**Date:** Wednesday, January 28th

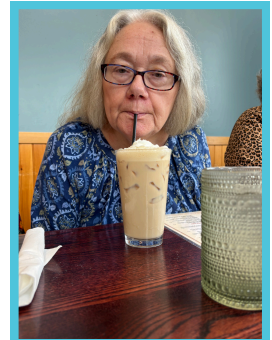
**Time:** Bus departs at 4:30pm

**Price:** \$6

*Minimum Registrations: 7 people*

*Maximum Registrations: 12 people*

**Activity Level: Easy Going-- level 1**



## National Hot Cocoa Day

We are celebrating National Hot Chocolate Day a day early, by having a Hot Cocoa Bomb making craft day at the Ballpark. Hot cocoa bombs are hollow chocolate spheres filled with hot cocoa mix and other goodies, like mini marshmallows or crushed peppermints! When placed in a mug and covered in hot milk or water, the chocolate shell melts, the contents "explode", thus creating a fun & delicious cup of hot chocolate! Fee covers all supplies.

**Date:** Friday, January 30th

**Time:** Bus departs at 11am

**Price:** \$6

*Minimum Registrations: 7 people*

**Activity Level: Easy Going-- level 1.5**



## FEBRUARY PROGRAMS

### Sleigh Ride & S'mores

We are off to Coppal House Farm in Lee, New Hampshire for an escape to the countryside! We will enjoy a private 30-minute horse drawn ride for our entire group through the serene farm fields and wooded trails. If there is snow, we will be on a beautiful sleigh, if there is no snow, we will be on a cozy wagon. After our ride, we will enjoy a private bonfire where we can relax and warm up. S'more kits will be provided at the bonfire for a fun treat. Feel free to bring your own beverage if you would like. We will stop for brunch before the ride.



**Date:** Sunday, February 1st

**Time:** Bus departs at 9:15am

**Price:** \$45

*Minimum Registrations: 7 people*

*Maximum Registrations: 11 people*

**Activity Level: Moderate-- level 2**

### Maine Mariners Hockey Game

Dust off your hockey jerseys, because we are off to see the Maine Mariners take on the Orlando Sun Bears! This special evening out includes a lower level ticket on the end that the Mariners shoot twice, a Maine Mariners souvenir pennant, a post-game group photo on the ice, a soft drink voucher, a food voucher for your choice of pizza, burger or chicken tenders, and an extra special, super cool, wicked amazing, game day opportunity!

**Date:** Wednesday, February 4th

**Time:** Bus departs at 5:15pm

**Price:** \$47

*Minimum Registrations: 7 people*

*Maximum Registrations: 12 people*

**Activity Level: Moderate-- level 2**



### Chocolate Fondue Day & Valentine's Party

It's National Chocolate Fondue Day....I think that speaks for itself. Join us at the recreation department for a fun Valentine's (or anti-Valentine's, whichever you celebrate) party that includes fun music, great company, and dipping everything you can imagine in chocolate....



**Date:** Thursday, February 5th

**Time:** 11:30am

**Price:** \$5

*Minimum Registrations: 7 people*

**Activity Level: Easy Going-- level 1**



## Craft Store Crawl

We are heading to the Lewison/Auburn area for a day of shopping for arts & crafts supplies! As we head in to spring, it's time to restock after a cold winter of crafting! We will make stops at the Fabric Warehouse, Butler Hill Beads, and Hobby Lobby. We can make other stops too, the day is ours! We will also stop for lunch and possibly a treat. Fee covers transportation only. Any purchases are on your own.



**Date:** Tuesday, February 10th

**Time:** Bus departs at 9:30am

**Price:** \$8

*Minimum Registrations: 7 people*

*Maximum Registrations: 13 people*

**Activity Level: Moderate-- level 2**



## Escape Room

We had such a great time this fall, both teams were successful in escaping, so let's see if we can do it again! This time we will be heading to the Monkey Mind Escape Rooms in Portsmouth! Depending on how many registrations we get, we will split up into 2 groups again. We will stop for a late lunch at The Goat.

**Date:** Thursday, February 12th

**Time:** Bus departs at 12:15pm

**Price:** \$30

*Minimum Registrations: 7 people*

*Maximum Registrations: 12 people*

**Activity Level: Moderate-- level 2**



## Friday the 13<sup>th</sup> Mystery Matinee--Scary

It's been awhile since we've done a mystery matinee! Similarly to our mystery meals, the movie is unknown! Since it is Friday the 13<sup>th</sup> (insert menacing laugh here), the plan is to see something in the thriller/spooky/horror category this time around. We will go check out the Entertainment Luxury Cinema in South Portland.

**Date:** Friday, February 13th

**Time:** Bus departs at 11:15am

**\*\*This is tentative and could change depending on movie schedule**

**Price:** \$13

*Minimum Registrations: 7 people*

*Maximum Registrations: 13 people*

**Activity Level: Easy Going-- level 1**





## Lilac Casino

Join us as we head to Rochester, New Hampshire to check out the new Lilac Casino! The casino offers blackjack, poker, roulette, and other table games along with a 12-table poker room. It also features over 200 gaming machines! Lilac Casino is also home to Granite State Bingo, with Wednesday matinee bingo games beginning at 12:30pm! Be sure to grab lunch at the Lucky Oak Bar + Grill to refuel while you're winning allllll the money!



**Date:** Wednesday, February 18th

**Time:** Bus departs at 9:30am

**Price:** \$10

*Minimum Registrations: 7 people*

*Maximum Registrations: 12 people*

**Activity Level: Moderate-- level 2**

## Taste the World Mysery Dinner: Mexican

Our final mystery dinner of our winter taste the world series! Join us as we enjoy a taste of Mexico!



**Date:** Thursday, February 19th

**Time:** Bus departs at 4:30pm

**Price:** \$6

*Minimum Registrations: 7 people*

*Maximum Registrations: 12 people*

**Activity Level: Easy Going-- level 1**



## Mall Scavenger Hunt

Forget power walking--we are power searching (for clues)! Grab your sense of adventure as we take over the Maine Mall for a hilarious scavenger hunt! Team will compete to find wacky items and snap silly photos throughout the mall--no purchases necessary or required, unless that sale at Bath & Body Works is just too good to ignore! We will grab lunch at the food court while we go over our scavenger hunt results and laugh about the adventure!



**Date:** Tuesday, February 24th

**Time:** Bus departs at 9:45am

**Price:** \$4

*Minimum Registrations: 6 people*

*Maximum Registrations: 13 people*

**Activity Level: Moderate-- level 2.5**

## Mystery Lunch @ the Green Ladle

The Green Ladle is a student-run restaurant through the culinary arts program at the Lewiston Regional Technical Center. The restaurant is open to the public, 2 days per week, with a new themed menu each week. Students rotate through positions, from food prep to head chef to hosting and serving. The buffet style lunch will include several dishes made by students. The theme and menus are TBD, thus the mystery! Fee covers transportation, meal, drink, tax & gratuity!

**Date:** Thursday, February 26th

**Time:** Bus departs at 9:45am

**Price:** \$28

*Minimum Registrations: 7 people*

*Maximum Registrations: 12 people*

**Activity Level: Easy Going-- level 1**



## Rochester Opera House & Dinner

We are off to the Rochester Opera House for a special theater event, "The Mystery at Walt Chester World". *"It's opening night at Strafford County's newest and largest family amusement park. Tension runs deep as city officials and design professionals wrangle for control of the park. Fortunately, Dixon DaCooter and his gang of Lilac City Angels ride in from Farmington to save the day. Unfortunately, someone dies and you are left to solve the mystery."* We will stop for dinner before the show. Fee covers transportation and theater ticket, dinner will be on your own.

**Please note that this performance travels throughout the Opera House and City Hall, the main stage show is fully accessible, but patrons with limited mobility may not be able to access all of the remote scene locations.**

**More information from their website: Join us for this irreverent, disrespectful, politically incorrect and insulting piece of original theatre. Please go elsewhere if you are easily offended. This show is intended for mature audiences that DO NOT offend easily. This show is heavy on the music, light on the story, and indifferent to cultural sensitivity.**



**Date:** Friday, February 27th

**Time:** Bus departs at 3:00pm

**Price:** \$55

*Minimum Registrations: 7 people*

*Maximum Registrations: 12 people*

**Activity Level: Moderately Active--level 2.5**



Local Community Events

# All Are Welcome

Please join us for our Free

# Community Dinner

**Thanksgiving Feast  
with all the fixings  
and our EPIC dessert  
table!**

**Sunday  
November 16, 2025  
1pm to 4pm**

**At the American Legion Hall  
14 Imperial Street  
Old Orchard Beach**

**Want to make something for  
our event? Just let us know!**

**Contact Sharri MacDonald  
smacdonald@maine.rr.com**

**207-590-4201**



**IT'S HAPPENING  
IN OLD ORCHARD BEACH!**

**Grab a friend, bring the family or come alone!**



# Local Community Events



## *10th Annual* SCARBOROUGH COMMUNITY THANKSGIVING DINNER 2025

Dinner will be served at  
Wentworth School on  
Thursday, November 27th  
between 11:00 a.m. and 1:00 p.m.

This event is open to the public & free of charge.  
We're excited to share this special day with our  
neighbors and friends.

Kindly RSVP by **November 19th** online  
[www.scarboroughcommunitythanksgiving.org](http://www.scarboroughcommunitythanksgiving.org)  
or by phone (207) 730-4171



# Local Community Events



## 2025 Celebration By the Sea

Saturday, Dec. 6  
3–5:30 PM

Veteran's Memorial Park &  
The Chamber, 11 1<sup>st</sup> St

### Town of Old Orchard Beach Community Food Drive



Drop-Of Locations  
At All Town Offices

Helping families in need in our local community

**Thank you!**

est. 1883 Old  
Orchard  
Beach



# Local Community Events



## OLD ORCHARD BEACH REC PRESENTS 4TH ANNUAL BREAKFAST IN WHOVILLE AT THE BALLPARK

-  Full Breakfast
-  Pajama Party
-  Music & Crafts
-  Meet the Grinch
-  Letters to Santa



### 2 FAMILY FRIENDLY SESSIONS

8:30AM-9:30AM

&

10:00AM-11:00AM

ADULTS: \$12 EACH

KIDS (3 & UP): \$9 EACH

KIDS 2 & UNDER ARE FREE

REGISTER ONLINE NOW AT [WWW.OOBREC.COM](http://WWW.OOBREC.COM)

FMI: 207-934-0860 - [KCLARK@OOBMAINE.COM](mailto:KCLARK@OOBMAINE.COM)

PLAY **Old Orchard Beach**  
Memories Start Here





# Community Services

**WE HAVE MANY MOBILITY ITEMS TO LOAN AT NO COST**

**LOAN CLOSET**

**Crutches  
Walker  
Digital Blood Pressure Machine  
WheelChair  
Shower Seat  
Grabber  
Hospital Bed  
Cane  
Rollator Walker  
Portable Commode  
Transfer lift  
Transfer Chair  
Knee Walker  
& More**

Rotary 

Rotary 

Rotary   
**LOAN CLOSET**

**FOR MORE INFORMATION**

**Contact**

**Mary Beth Robillard  
207-468-6454**

**Dennis Robillard  
207-468-0443**

**Rotary**  
Saco Bay Sunset



**Don't Hesitate to  
Call and Ask!**



# Community Services



## "Good Morning OOB" Program!



The Old Orchard Beach Police Department is pleased to sponsor the "Good Morning OOB" Program designed to assist senior citizens/adults with disabilities living in the community. The goal is to assist our seniors so that they may continue living an independent lifestyle, and provide families the security of knowing that their loved one will have a source of daily contact.

### Who can participate?

- Must be a resident of OOB.
- Must agree to make a daily telephone call.
- Must agree to let us know when you plan to be away.
- Must be a senior citizen (62+) or an adult with disabilities in the community who could be living alone, does not have someone to check in on them regularly, are at risk of sudden illnesses, falls, accidents, and social isolation.



- FREE
- EASY
- CONFIDENTIAL

A member of the OOBPD will call 5 days a week, between 8:30 AM and 10:30 AM, to say "Good Morning". If contact cannot be made by telephone, an officer will come to check the welfare of the participant.

*You can request an application from  
the OOBPD at 207-937-5837*

*The program does not replace or provide emergency services, transportation or give medical or legal advice*

## Community Services

# DONATION CLOSET

The OOB Donation Closet consists of gently worn women's, men's, and children's items such as clothes, shoes, coats, bedding, and other essential items for community members in need.

The OOB Donation Closet is a low barrier resource that is completely free, no insurance needed.

If there are items that you or your family need that are not available in the OOB Donation Closet, we will work with you and your family to obtain specific items.



Located at 7 Ballpark Way  
Old Orchard Beach ME,  
04064

### **Items we will GLADLY accept/offer:**

- Current season clothing
- Shoes (adult and child sizes)
- Lightly used bedding
- Jackets (child and adult sizes)
- Unused/unopened hygiene products
- Socks and unused undergarments

We **DO NOT** accept furniture

**Please call to schedule an appointment** with Olivia (Social Services Navigator) for clothing needs or donation questions.

We can provide pick up/drop off!

**odubois@oobmaine.com**

**OR**

**(207) 710-4195**





# Community Services



## Need a **QUICKRIDE** ?

**QuickRide is an on-demand rideshare in Biddeford, Saco, and Old Orchard Beach complementing our bus routes**

**We'll pick you up and drop you off anywhere within these service areas:**

- Barra Rd. Medical Offices
- Biddeford Industrial Park
- Saco Transportation Center
- Saco Industrial Park/Springhill Rd.
- Portland Rd. (from Saco Hannaford to Cascade Rd.)
- Ocean Park (from Temple to West Grand Ave)
- Old Orchard Beach Chamber of Commerce



### **Request a ride! Mon-Fri, 7am-6pm**

- Visit: [requestmyrides.com](http://requestmyrides.com)
- Use our app at these QR codes:
- Or call between 9am-5:30pm: 207-282-5408

**\$2 full fare, \$1 reduced fare using Dirigo Card or Umo Mobility app**

QuickRide is a pilot program which is subject to change. We appreciate feedback from the community about this program.



Google



Apple



# Winter Weather & Programs

Safety is our top priority. If winter storms, heavy snow, icy roads, or extreme cold make travel or activities hazardous, we may cancel, postpone, or modify our outing.

## How it works:

If the local weather forecast shows heavy snowfall, ice, blizzard conditions, or a wind-chill warning, our staff will evaluate: road conditions, parking lots, venue accessibility, and transport safety. A decision to cancel or postpone will be made as early as possible—ideally at least 4-6 hours before the outing start time (or earlier, depending on conditions).

Once a decision is made, we'll notify all registered participants via: phone call and update on our recreation department web page/social media.

## If we cancel:

You will receive a full refund of any trip fee OR be given the option to transfer to a rescheduled date / alternate event.

## If we proceed anyway:

We strongly encourage participants to use appropriate winter travel precautions: travel in daylight if possible, drive slowly, wear warm clothing/footwear, and let someone know your arrival and departure plan.

Bus departures may be earlier than usual to avoid deteriorating conditions—notified in advance if applicable.

## Your responsibility:

Even when the outing is on, you are responsible for your personal travel safety and dressing appropriately for the conditions.

## Bottom line:

If Mother Nature wins this round, we'll bring the fun back on a better (and safer) day! Stay tuned, stay safe, and we'll always keep you posted.

## Recreation Staff

**Jason Webber**, Recreation Director [jwebber@oobmaine.com](mailto:jwebber@oobmaine.com)

**Nikki Duplisea**, Assistant Recreation Director [nduplisea@oobmaine.com](mailto:nduplisea@oobmaine.com)

**Frank Perez**, Youth Sports Coordinator [fperez@oobmaine.com](mailto:fperez@oobmaine.com)

**Haley Plante**, Wellness, Summer Camp, & Childcare Programmer  
[hplante@oobmaine.com](mailto:hplante@oobmaine.com)

**Cat Skeen**, Summer Camp & Childcare Programmer [cskeen@oobmaine.com](mailto:cskeen@oobmaine.com)

**Kira Clark**, Billing & Registrations, 50+ Club Coordinator [kclark@oobmaine.com](mailto:kclark@oobmaine.com)

